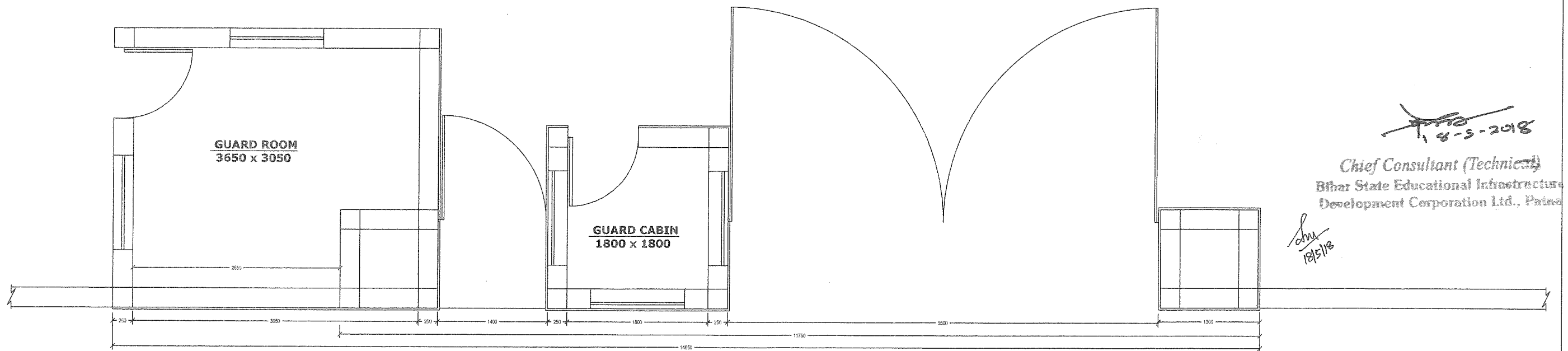


**ELEVATION (Main Gate & Guard Room)**



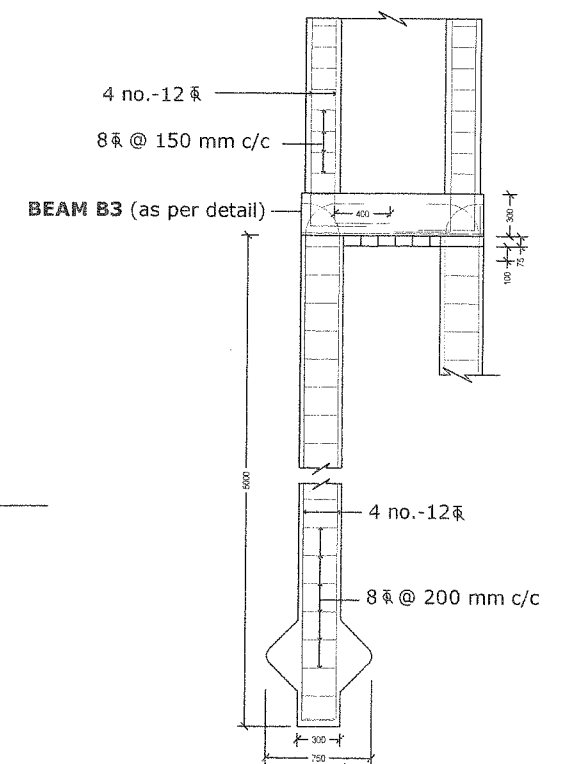
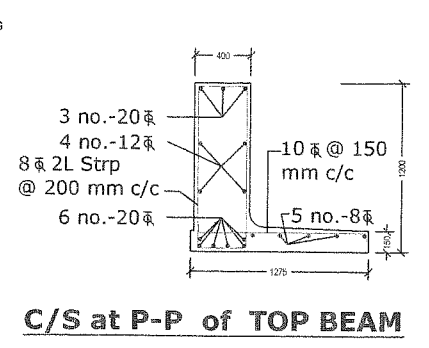
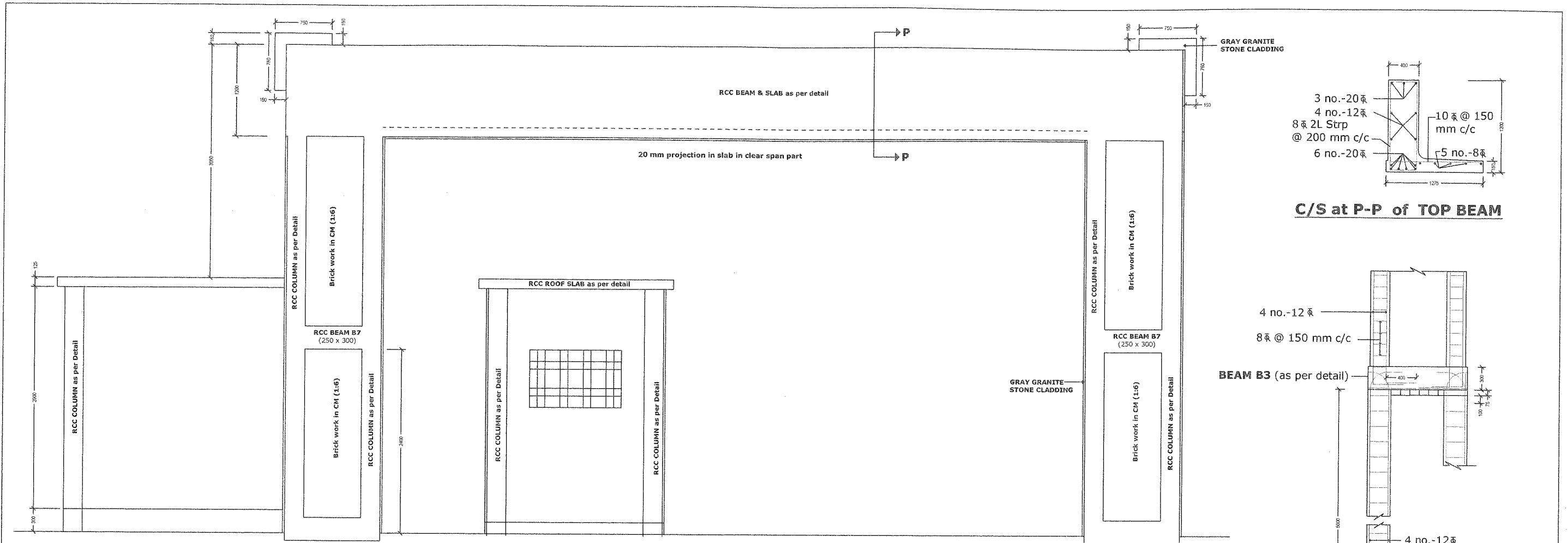
**PLAN (Main Gate & Guard Room)**

**Note :**  
 1. All dimensions are in mm (otherwise specified).  
 2. Development Length (Ld) = 50 x dia of bar  
 3. Clear cover : For Pile - 40 mm, For Beam - 25 mm, For Column - 40 mm.

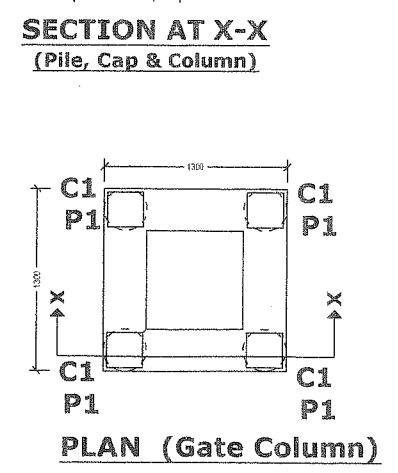
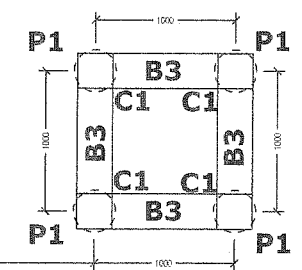
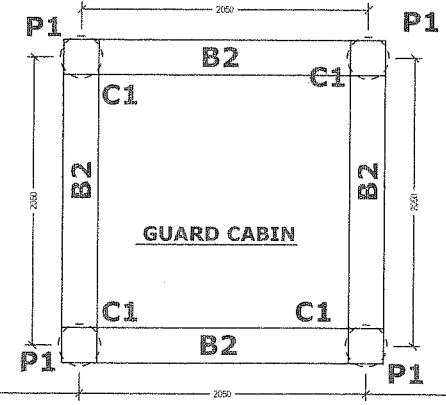
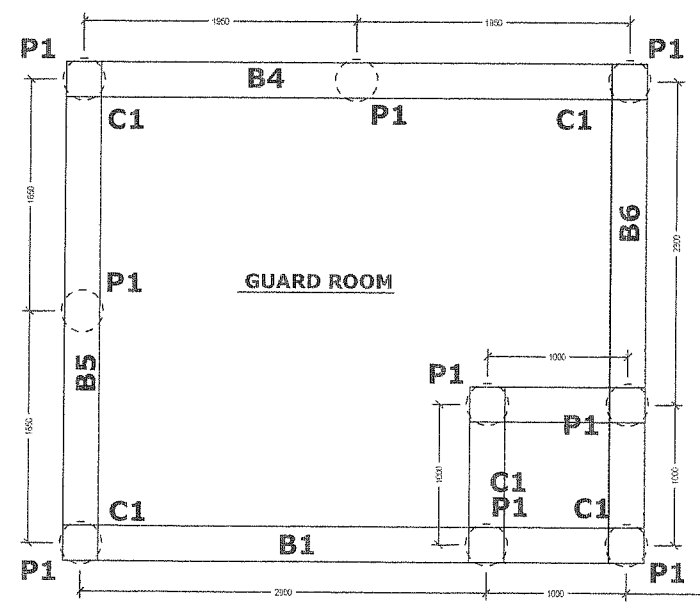
Date : 05-05-2018  
 Bihar State Educational Infrastructure Development Corporation Ltd, Patna

Project : CONSTRUCTION OF BOUNDARY WALL & GATE FOR DIET CAMPUS  
 Sheet : DETAILS OF ENTRANCE GATE

*18/5-5-2018*  
 Chief Consultant (Technical)  
 Bihar State Educational Infrastructure Development Corporation Ltd., Patna  
*18/5/18*



**SECTIONAL DETAILS OF (Main Gate & Guard Room)**



**LAYOUT PLAN (PILE, TIE BEAM & COLUMN) of Main Gate & Guard Room)**

Note :

- All dimensions are in mm (otherwise specified).
- Development Length (Ld) = 50 x dia of bar
- Clear cover : For Pile - 40 mm, For Beam - 25 mm, For Column - 40 mm.
- All Piles (P1) are same design of 300 mm dia; All Columns (C1) are same design of 250 x 250 mm section.

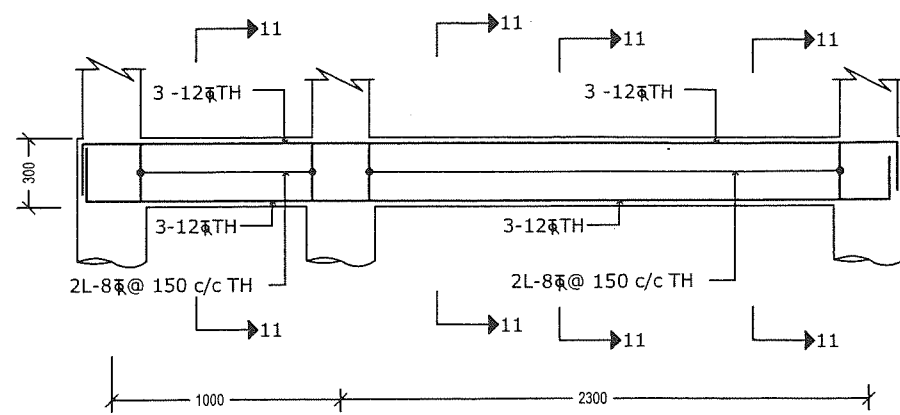
Date : 05-05-2018

**Bihar State Educational Infrastructure Development Corporation Ltd, Patna**

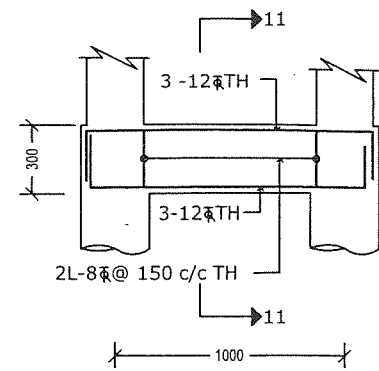
Project : CONSTRUCTION OF BOUNDARY WALL & GATE FOR DIET / PTEC CAMPUS

Sheet : DETAILS OF ENTRANCE GATE

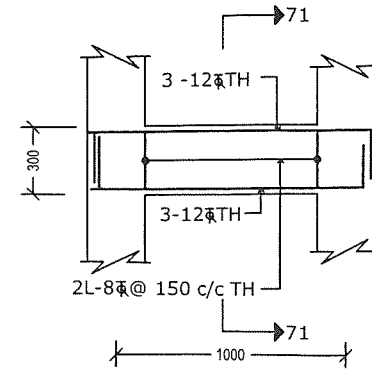
*Chief Consultant (Technical)*  
 Bihar State Educational Infrastructure Development Corporation Ltd., Patna  
 18-5-2018



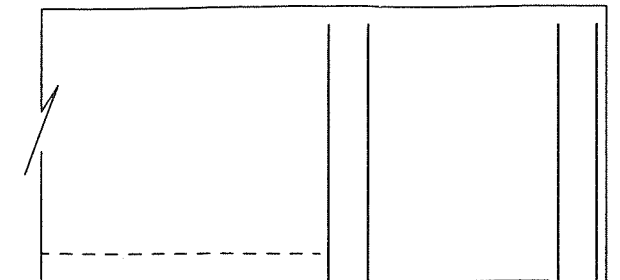
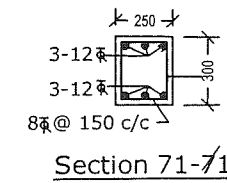
Rein. Detail of Beam B6  
(300 x 300)



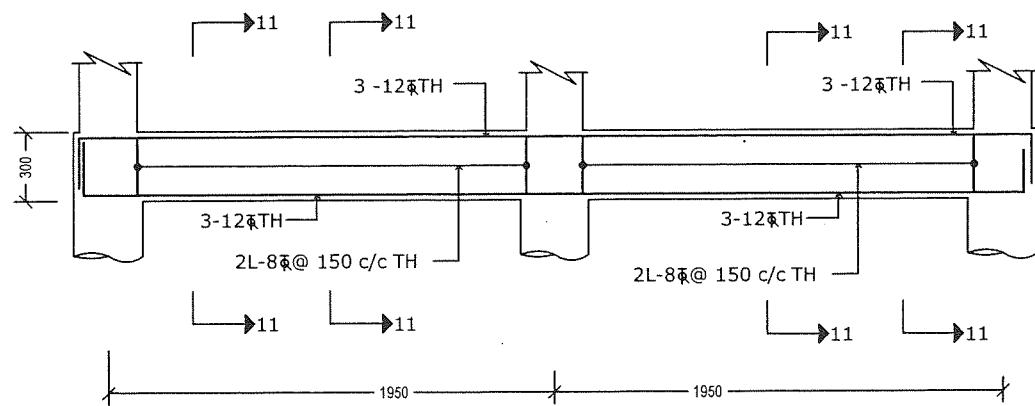
Rein. Detail of Beam B3  
(300 x 300)



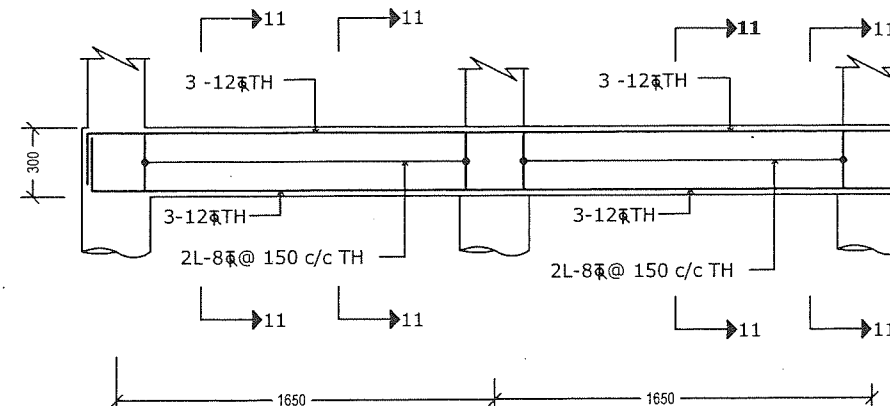
Rein. Detail of Beam B7  
(250 x 300)



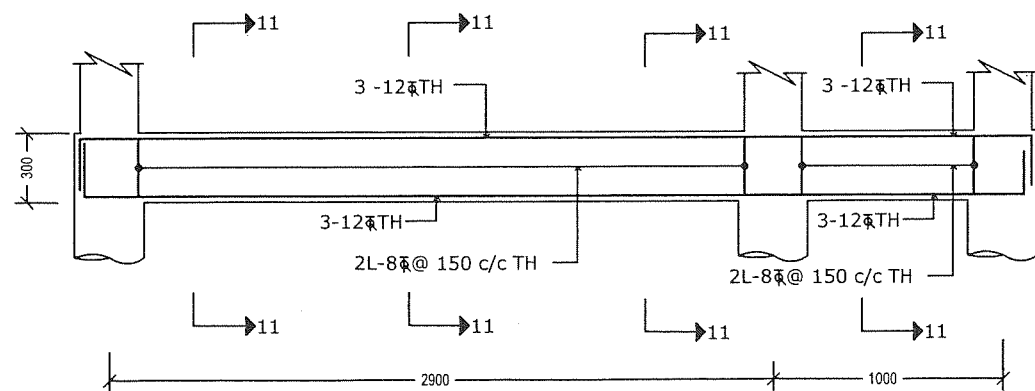
TOP BEAM  
(as per detail)



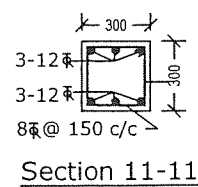
Rein. Detail of Beam B4  
(300 x 300)



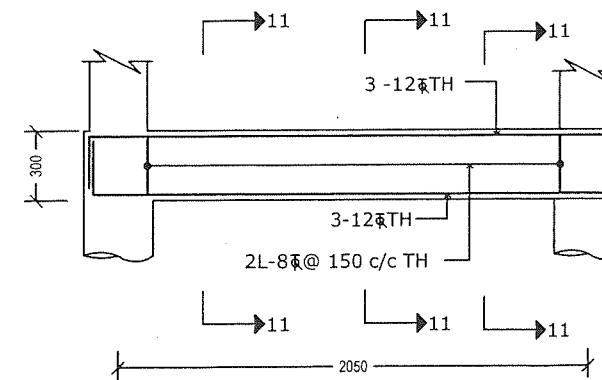
Rein. Detail of Beam B5  
(300 x 300)



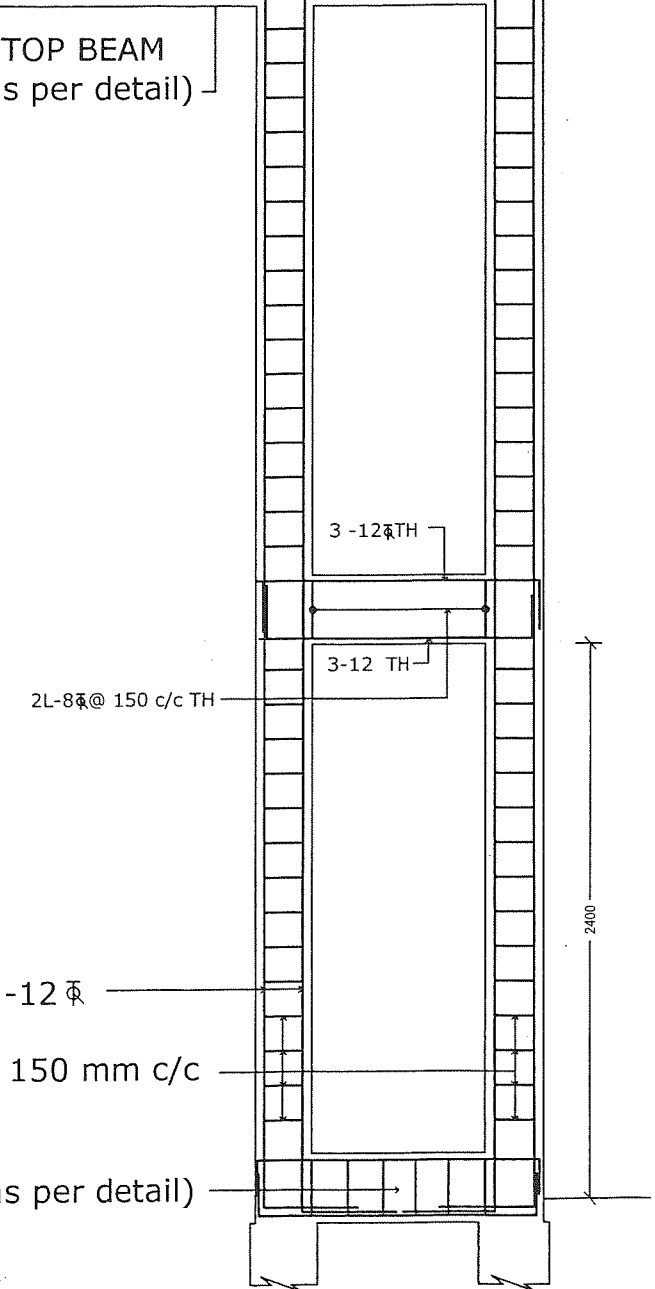
Rein. Detail of Beam B1  
(300 x 300)



Section 11-11



Rein. Detail of Beam B2  
(300 x 300)



BEAM B3 (as per detail)

Note :

1. All dimensions are in mm (otherwise specified).
2. Development Length (Ld) = 50 x dia of bar
3. Clear cover : For Pile - 40 mm, For Beam - 25 mm, For Column - 40 mm.

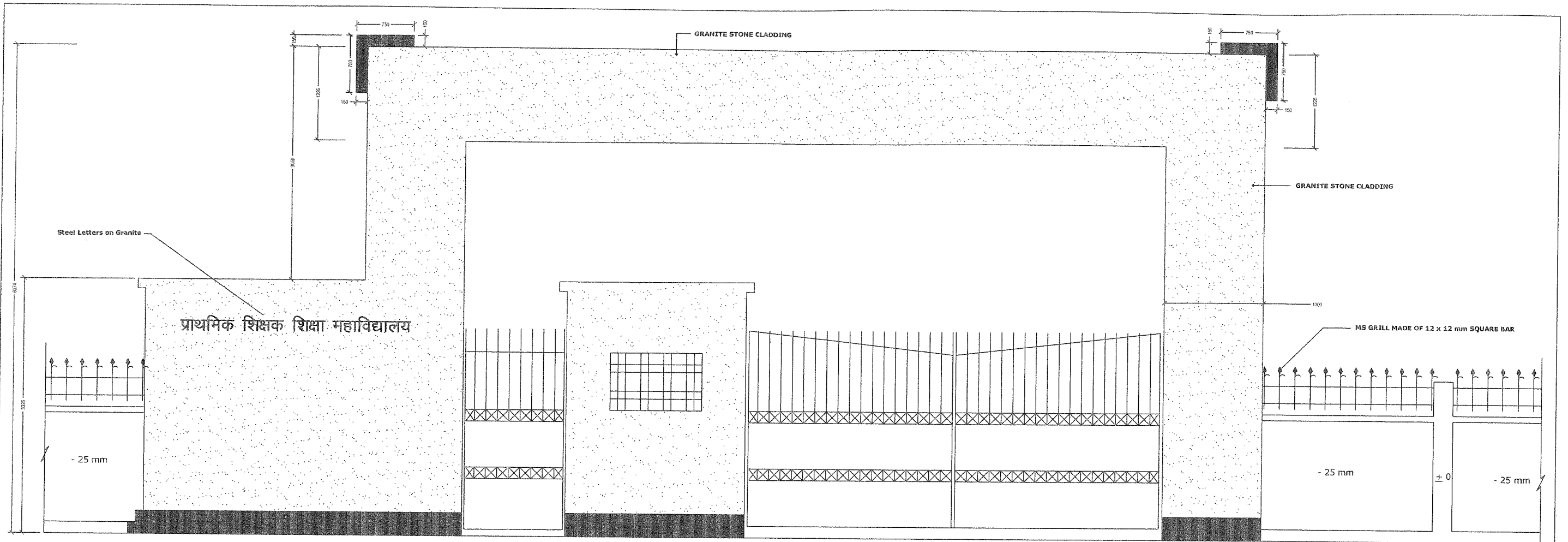
Date :  
05-05-2018

Bihar State Educational Infrastructure  
Development Corporation Ltd, Patna

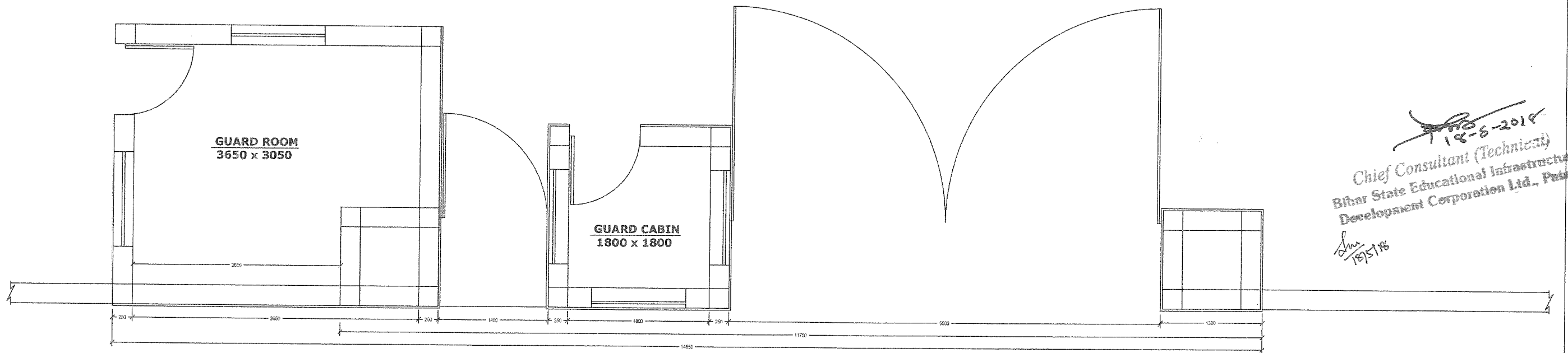
Project : CONSTRUCTION OF BOUNDARY WALL & GATE  
FOR DIET / PTEC CAMPUS AT

Sheet : DETAILS OF

18-5-2018  
Chief Consultant (Technical)  
Bihar State Educational Infrastructure  
Development Corporation Ltd., Patna



**ELEVATION (Main Gate & Guard Room)**



**PLAN (Main Gate & Guard Room)**

Note :  
 1. All dimensions are in mm (otherwise specified).  
 2. Development Length (Ld) = 50 x dia of bar  
 3. Clear cover : For Pile - 40 mm, For Beam - 25 mm, For Column - 40 mm.

Date :  
 05-05-2018

**Bihar State Educational Infrastructure  
 Development Corporation Ltd, Patna**

Project : CONSTRUCTION OF BOUNDARY WALL & GATE FOR  
 PTEC CAMPUS

Sheet : DETAILS OF ENTRANCE GATE

*18-5-2018*  
 Chief Consultant (Technical)  
 Bihar State Educational Infrastructure  
 Development Corporation Ltd., Patna  
*18/5/18*