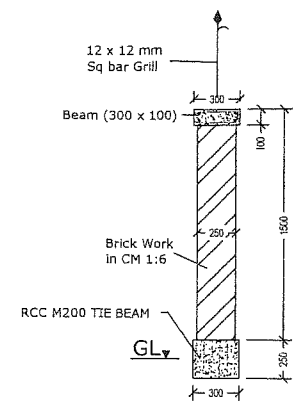
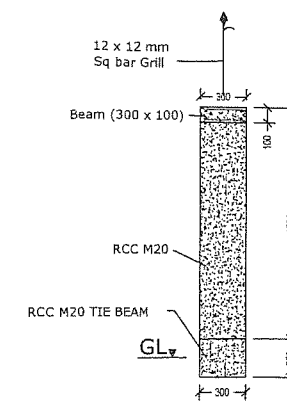


TYPICAL ELEVATION



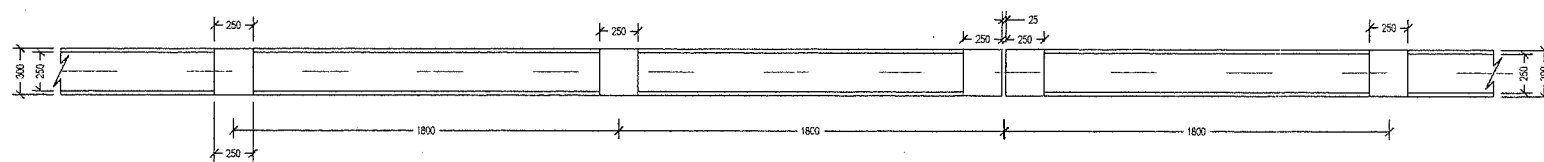
SECTION AT X-X



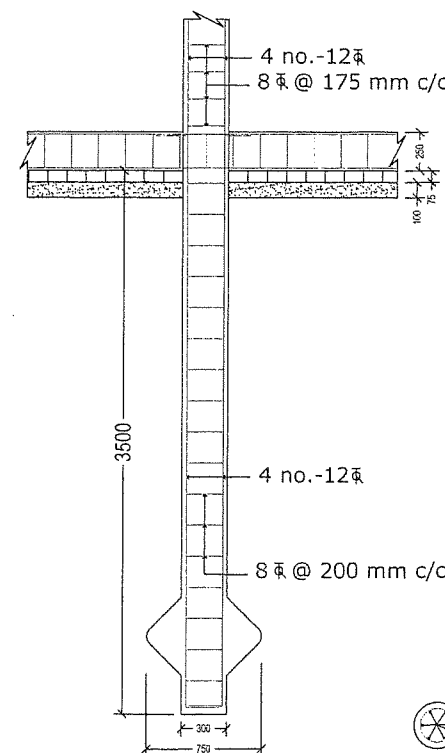
SECTION AT Y-Y

4 no.-8 $\bar{\Phi}$   
6 $\bar{\Phi}$  Strp @ 200 mm c/c

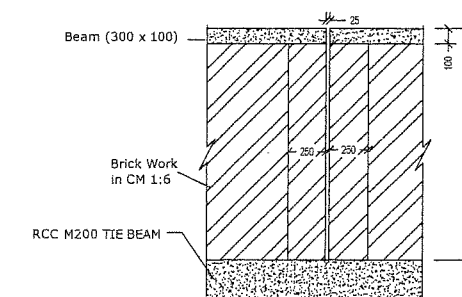
SECTION OF BEAM  
(300 x 100)



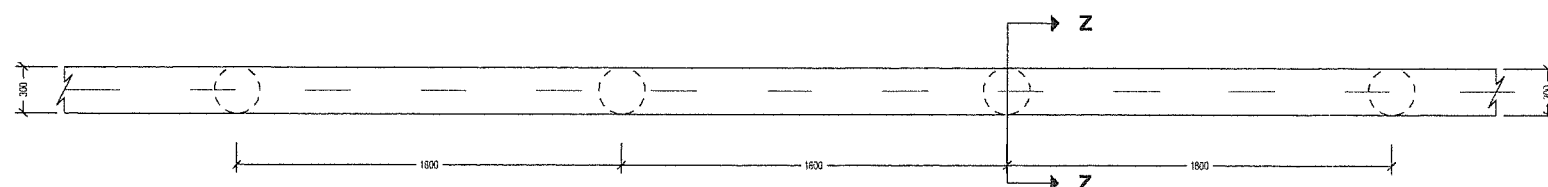
TYPICAL PLAN



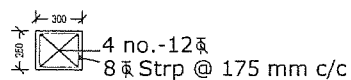
DETAILS OF PILE /  
SECTION AT Z-Z



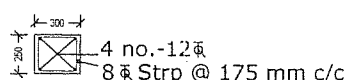
TYPICAL ELEVATION  
Near Expansion Joint



LAYOUT PLAN OF PILE & TIE BEAM



TYPICAL SECTION  
OF TIE BEAM



TYPICAL SECTION  
OF STIFFENERS

8 $\bar{\Phi}$  Ring @ 200 mm c/c  
4 no.-12 $\bar{\Phi}$

SECTIONAL  
PLAN OF PILE

14-5-2018  
Chief Consultant (Technical)  
Bihar State Educational Infrastructure  
Development Corporation Ltd., Patna

Note :

1. All dimensions are in mm (otherwise specified).
2. Development Length (Ld) = 50 x dia of bar
3. Clear cover : For Pile - 40 mm, For Tie beam - 25 mm, For Stiffener - 25 mm.
4. Expansion Gap shall be provided at regular interval of 30 m.

Date :  
05-05-2018

Bihar State Educational Infrastructure  
Development Corporation Ltd, Patna

Project : CONSTRUCTION OF BOUNDARY WALL FOR  
DIET / PTEC CAMPUS AT

Sheet : DETAILS OF BOUNDARY WALL